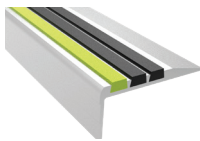


**DIV 5**

## STAIR TREADS + NOSINGS 05 5000

- Safe-T-Lume™
- Ribbed
- Full Bar
- Inset
- Two-Part
- Renovation
- Cast



## FALL PROTECTION 05 5213 / 07 7200

- Weighted Base Guardrail
- Perimeter Guardrail
- Corral Guardrail



Find Nystrom's specifications at these preferred suppliers:

**M MASTERSPEC**  
building specs done right

**BSD** Specify our Products in  
**speclink.e**

A complete set of BIM models is available on BIMsmith and [www.nystrom.com](http://www.nystrom.com)

**DIV 7**

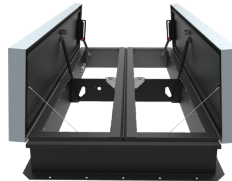
## ROOF HATCHES 07 7200

- Personnel
- Personnel II
- ThermalMAX™
- SunLit™
- Security
- Equipment
- Fall Protection



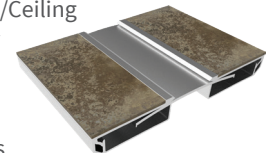
## SMOKE VENTS 07 7200

- SmokEscape™
- SunLit eco™
- SunLit™
- AcousticMAX™
- Fall Protection



## PREFORMED JOINT SEALS + EXPANSION JOINT SYSTEMS 07 9100 + 07 9513

- Interior Floor, Wall/Ceiling
- Exterior Wall, Roof
- Parking Deck
- Fire Barrier
- Compression Seals



**DIV 8**

## ACCESS DOORS 08 3100

- Non-Rated
- Fire Rated
- Security
- Specialty
- Exterior



## FLOOR DOORS 08 3483

- Fire-Rated
- Drainable
- Non-Drainable
- Retrofit
- Well Hatches
- Safety Accessories



## LUMINOUS EGRESS PRODUCTS 10 1443

- Handrail Markings
- Demarcation Markings
- Obstacle Markings
- Signage



**DIV 10**

**DIV 10**

## WALL + DOOR PROTECTION 10 2600

- Corner Guards
- Door Guards
- Chair + Crash Rails
- Handrails
- Bumper Guards
- Wall Coverings



## FIRE PROTECTION CABINET + FIRE EXTINGUISHERS 10 4413 + 10 4416

- Fire Cabinets
- Portable Fire Extinguishers
- Detention Cabinets
- Fire Blanket Cabinets
- Accessories



## ENTRANCE MATS + FRAMES ENTRANCE FLOOR GRILLES 12 4813 + 12 4816

- Architectural + Rigid Grilles
- Roll-Up Grilles
- Roll-Up Mats
- Vinyl Mats



**DIV 12**

### LOCAL PARTNER



Life Safety Hardware Consultants  
Ray Amato  
m 630.251.2427 | p 815.790.2056 | f 800.317.8770  
145 Tower Drive, Unit 5 | Burr Ridge, IL 60527  
ray@lshc.org | www.lshc.org

