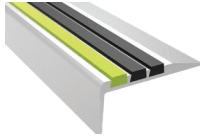


**DIV 5**

**STAIR TREADS + NOSINGS**  
05 5000

- Safe-T-Lume™
- Ribbed
- Full Bar
- Inset
- Two-Part
- Renovation
- Cast



**FALL PROTECTION**  
05 5213 / 07 7200

- Weighted Base Guardrail
- Perimeter Guardrail
- Corral Guardrail



Find Nystrom's specifications at these preferred suppliers:



building specs done right



Specify our Products in

A complete set of BIM models is available on BIMsmith and [www.nystrom.com](http://www.nystrom.com)

**DIV 7**

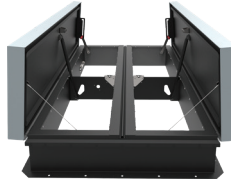
**ROOF HATCHES**  
07 7200

- Personnel
- Personnel II
- ThermalMAX™
- SunLit™
- Security
- Equipment
- Fall Protection



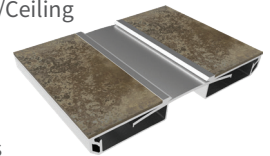
**SMOKE VENTS**  
07 7200

- SmokEscape™
- SunLit eco™
- SunLit™
- AcousticMAX™
- Fall Protection



**PREFORMED JOINT SEALS + EXPANSION JOINT SYSTEMS**  
07 9100 + 07 9513

- Interior Floor, Wall/Ceiling
- Exterior Wall, Roof
- Parking Deck
- Fire Barrier
- Compression Seals



**DIV 8**

**ACCESS DOORS**  
08 3100

- Non-Rated
- Fire Rated
- Security
- Specialty
- Exterior



**FLOOR DOORS**  
08 3483

- Fire-Rated
- Drainable
- Non-Drainable
- Retrofit
- Well Hatches
- Safety Accessories



**LUMINOUS EGRESS PRODUCTS**  
10 1443

- Handrail Markings
- Demarcation Markings
- Obstacle Markings
- Signage



**DIV 10**

**DIV 10**

**WALL + DOOR PROTECTION**  
10 2600

- Corner Guards
- Door Guards
- Chair + Crash Rails
- Handrails
- Bumper Guards
- Wall Coverings



**FIRE PROTECTION CABINET + FIRE EXTINGUISHERS**  
10 4413 + 10 4416

- Fire Cabinets
- Portable Fire Extinguishers
- Detention Cabinets
- Fire Blanket Cabinets
- Accessories



**ENTRANCE MATS + FRAMES**  
**ENTRANCE FLOOR GRILLES**  
12 4813 + 12 4816

- Architectural + Rigid Grilles
- Roll-Up Grilles
- Roll-Up Mats
- Vinyl Mats



**DIV 12**

**LOCAL PARTNER**

**Hughes Agency**

Hughes Agency  
p 253.939.8115 | f 253.288.8784  
ann@premierhardwareproducts.com  
matt@premierhardwareproducts.com  
301 30th Street NE, Suite 106 | Auburn, WA 98002

