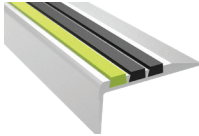


DIV
5

STAIR TREADS + NOSINGS 05 5000

- Safe-T-Lume™
- Ribbed
- Full Bar
- Inset
- Two-Part
- Renovation
- Cast



FALL PROTECTION 05 5213 / 07 7200

- Weighted Base Guardrail
- Perimeter Guardrail
- Corral Guardrail



Find Nystrom's specifications at these preferred suppliers:



A complete set of BIM models is available on BIMsmith and

www.nystrom.com

DIV
7

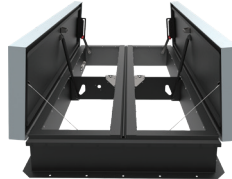
ROOF HATCHES 07 7200

- Personnel
- Personnel II
- ThermalMAX™
- SunLit™
- Security
- Equipment
- Fall Protection



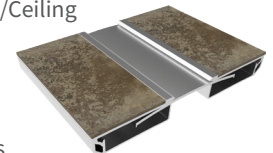
SMOKE VENTS 07 7200

- SmokEscape™
- SunLit eco™
- SunLit™
- AcousticMAX™
- Fall Protection



PREFORMED JOINT SEALS + EXPANSION JOINT SYSTEMS 07 9100 + 07 9513

- Interior Floor, Wall/Ceiling
- Exterior Wall, Roof
- Parking Deck
- Fire Barrier
- Compression Seals



DIV
8

ACCESS DOORS 08 3100

- Non-Rated
- Fire Rated
- Security
- Specialty
- Exterior



FLOOR DOORS 08 3483

- Fire-Rated
- Drainable
- Non-Drainable
- Retrofit
- Well Hatches
- Safety Accessories



LUMINOUS EGRESS PRODUCTS 10 1443

- Handrail Markings
- Demarcation Markings
- Obstacle Markings
- Signage



DIV
10

DIV
10

WALL + DOOR PROTECTION 10 2600

- Corner Guards
- Door Guards
- Chair + Crash Rails
- Handrails
- Bumper Guards
- Wall Coverings



FIRE PROTECTION CABINET + FIRE EXTINGUISHERS 10 4413 + 10 4416

- Fire Cabinets
- Portable Fire Extinguishers
- Detention Cabinets
- Fire Blanket Cabinets
- Accessories



ENTRANCE MATS + FRAMES ENTRANCE FLOOR GRILLES 12 4813 + 12 4816

- Architectural + Rigid Grilles
- Roll-Up Grilles
- Roll-Up Mats
- Vinyl Mats



DIV
12

LOCAL PARTNER



Gavin Associates, Inc.
Ben Gavin | Lee Gavin | Bill Pratt | Dan O'Connor
Tony Gardner | Dan Light | Cody Nizolek
p 508.381.1090 | f 508.381.1095
8 Condon Way | Hopedale, MA 01747
info@gavinassociates.com | www.gavinassociates.com

