

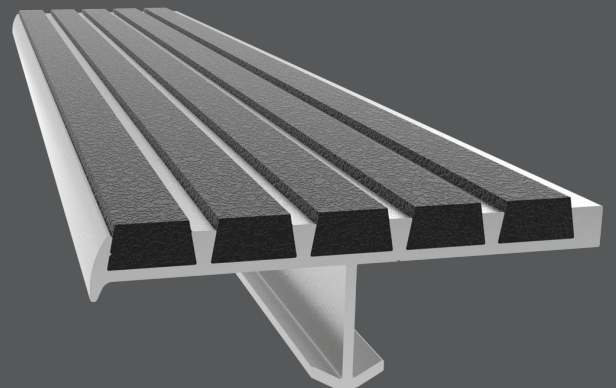


NEW

Introducing the industry's only sustainable safety treads:

EcoTread™ Stair Nosings.

- Made from 90% recycled rubber
- 100% recyclable materials
- Fade and wear resistant
- Easy to clean and maintain
- Easily replaceable
- Contemporary color choices



EcoTread™
STAIR TREADS + NOSINGS

EcoTread™

STAIR TREADS + NOSINGS

Sustainability, one step at a time.

The EcoTread Stair Nosings offer a sustainable and ecofriendly material option. An industry first, these treads are engineered with recycled aluminum and rubber. Multiple tread options provide a wide variety of coordinating color options that are perfect for both interior and exterior use.

FADE + WEAR RESISTANT
A durable product that will stand up to weather extremes and foot traffic.






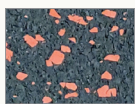
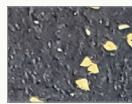
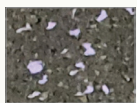
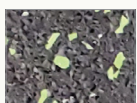

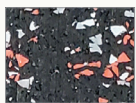
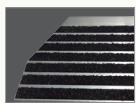
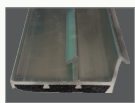

RECYCLED + RECYCLABLE
These sustainable treads are made from 90%† recycled rubber and the entire system is 100% recyclable.

EASILY REPLACEABLE
Should a tread get damaged, replacement insert installation is quick and easy.

EASY TO CLEAN + MAINTAIN
These stain and chemical resistant treads are coated with a water-based protectant.

CONTEMPORARY COLOR CHOICES
Choose from 11 EcoTread color options to complement your building aesthetics.


OPTIONS

 Black EcoTread [†] 90%	 Safety Yellow EcoTread 5%	 Gray/Black EcoTread 10%	 Blue EcoTread 84%	 Gray EcoTread 84%	 Red EcoTread 84%	 Yellow EcoTread 84%
 Purple EcoTread 84%	 Green EcoTread 84%	 Blue/Gray EcoTread 84%	 Red/Gray EcoTread 84%	 Mitered Cuts	 Painted Undersides	 Taped Tops

Photoluminescent

Resin Strip (STSM, STRM & STTM only)

Abrasive Grit Strip (STSM, STRM & STTM only)



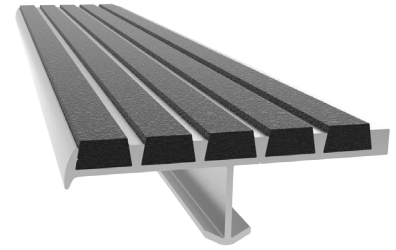
*Colors shown give only an indication of shade. Samples are available upon request.
†90% recycled rubber available in Black EcoTread only. All other recycled content noted by color swatches.*

Ribbed Abrasive

STAIR TREADS + NOSINGS

MODELS

MODEL	WIDTH	NOSING	TREAD INSERT	INSTALL
STSB-C1.875E-ECO	1-7/8"	Short	EcoTread	Cast-In, Extruded Anchor
STSB-C1.875D-ECO	1-7/8"	Short	EcoTread	Drilled Hole, Mech. Fastened
STSB-P1.875E-ECO	1-7/8"	Short Tipped	EcoTread	Cast-In, Extruded Anchor
STSB-P1.875D-ECO	1-7/8"	Short Tipped	EcoTread	Drilled Hole, Mech. Fastened
STSB-L1.875E-ECO	1-7/8"	Long	EcoTread	Cast-In, Extruded Anchor
STSB-L1.875D-ECO	1-7/8"	Long	EcoTread	Drilled Hole, Mech. Fastened
STSB-A1.875D-ECO	1-7/8"	Angled Long	EcoTread	Drilled Hole, Mech. Fastened
STSB-C3E-ECO	3"	Short	EcoTread	Cast-In, Extruded Anchor
STSB-C3D-ECO	3"	Short	EcoTread	Drilled Hole, Mech. Fastened
STSB-P3E-ECO	3"	Short Tipped	EcoTread	Cast-In, Extruded Anchor
STSB-P3D-ECO	3"	Short Tipped	EcoTread	Drilled Hole, Mech. Fastened
STSB-L3E-ECO	3"	Long	EcoTread	Cast-In, Extruded Anchor
STSB-L3D-ECO	3"	Long	EcoTread	Drilled Hole, Mech. Fastened
STSB-A3E-ECO	3"	Angled Long	EcoTread	Cast-In, Extruded Anchor
STSB-A3D-ECO	3"	Angled Long	EcoTread	Drilled Hole, Mech. Fastened
STSB-C4E-ECO	4"	Short	EcoTread	Cast-In, Extruded Anchor
STSB-C4D-ECO	4"	Short	EcoTread	Drilled Hole, Mech. Fastened
STSB-P4E-ECO	4"	Short Tipped	EcoTread	Cast-In, Extruded Anchor
STSB-P4D-ECO	4"	Short Tipped	EcoTread	Drilled Hole, Mech. Fastened



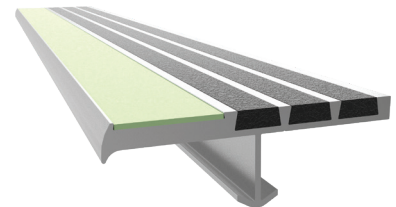
Ribbed Bar Abrasive
STSB-P3E-EK shown

Safe-T-Lume™

STAIR TREADS + NOSINGS

MODELS

MODEL	WIDTH	NOSING	TREAD/INSERT	INSTALL
STSM-P3E-ECO	3"	Short Tipped	EcoTread and Photoluminescent Resin Strip	Cast-In, Extruded Anchor
STSM-P3D-ECO	3"	Short Tipped	EcoTread and Photoluminescent Resin Strip	Drilled Hole, Mech. Fastened
STSM-P3E-T-ECO	3"	Short Tipped	EcoTread and Photoluminescent Abrasive Grit Strip	Cast-In, Extruded Anchor
STSM-P3D-T-ECO	3"	Short Tipped	EcoTread and Photoluminescent Abrasive Grit Strip	Drilled Hole, Mech. Fastened



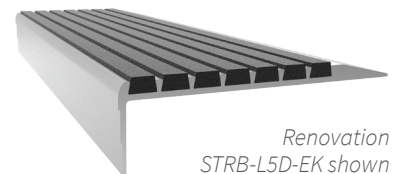
Safe-T-Lume™
STSM-P3E-ECO shown

Renovation

STAIR TREADS + NOSINGS

MODELS

MODEL	WIDTH	NOSING	TREAD	INSTALL
STRB-L5D-ECO	5"	Long	EcoTread	Drilled Hole, Mech. Fastened
STRB-L9D-ECO	9"	Long	EcoTread	Drilled Hole, Mech. Fastened
STRB-L11D-ECO	11"	Long	EcoTread	Drilled Hole, Mech. Fastened
STRB-A5D-ECO	5"	Angled Long	EcoTread	Drilled Hole, Mech. Fastened
STRB-A9D-ECO	9"	Angled Long	EcoTread	Drilled Hole, Mech. Fastened
STRB-A11D-ECO	11"	Angled Long	EcoTread	Drilled Hole, Mech. Fastened



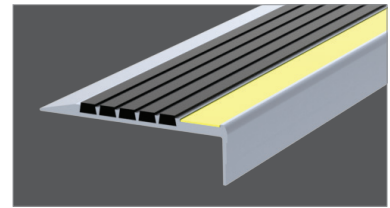
Renovation
STRB-L5D-EK shown

Safe-T-Lume™ Rennovation

STAIR TREADS + NOSINGS

MODELS

MODEL	WIDTH	NOSING	TREAD/INSERT	INSTALL
STRM-L5D-ECO	5"	Long	EcoTread and Photoluminescent Resin Strip	Drilled Hole, Mech. Fastened
STRM-A5D-ECO	5"	Angled Long	EcoTread and Photoluminescent Resin Strip	Drilled Hole, Mech. Fastened
STRM-L5D-T-ECO	5"	Long	EcoTread and Photoluminescent Abrasive Grit Strip	Drilled Hole, Mech. Fastened
STRM-A5D-T-ECO	5"	Angled Long	EcoTread and Photoluminescent Abrasive Grit Strip	Drilled Hole, Mech. Fastened



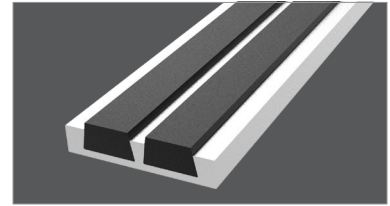
Safe-T-Lume™ Rennovation
STSM-L5D-ECO shown

Inset

STAIR TREADS + NOSINGS

RIBBED MODELS

MODEL	WIDTH	TREAD	INSTALL
STSB-N1.375D-ECO	1-3/8"	EcoTread	Drilled Hole, Mech. Fastened
STSB-N1.375E-ECO	1-3/8"	EcoTread	Cast-In, Extruded Anchor
STSB-N3D-ECO	3"	EcoTread	Drilled Hole, Mech. Fastened
STSB-N3E-ECO	3"	EcoTread	Cast-In, Extruded Anchor



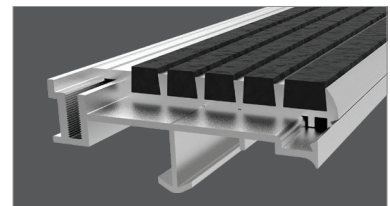
Inset
STSB-N1.375D-ECO shown

Two-Part

STAIR TREADS + NOSINGS

RIBBED MODELS

MODEL	WIDTH	TREAD	INSTALL
STTB-P3.375E-ECO	3-3/8"	EcoTread	Extruded Anchor



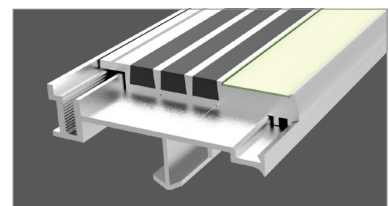
Two-Part
STTB-P3.375D-ECO shown

Safe-T-Lume™ Two-Part

STAIR TREADS + NOSINGS

RIBBED MODELS

MODEL	WIDTH	TREAD	INSTALL
STTM-P3.375E-ECO	3-3/8"	EcoTread and Photoluminescent Resin Strip	Cast-In, Extruded Anchor
STTM-P3.375E-T-ECO	3-3/8"	EcoTread and Photoluminescent Abrasive Grit Strip	Cast-In, Extruded Anchor



Two-Part
STTB-P3.375D-ECO shown



9300 73rd Avenue North
Minneapolis, MN 55428

Phone (800) 547-2635
Fax (866) 900-1959



nystrom.com

ECOTREAD FLYER 09/21